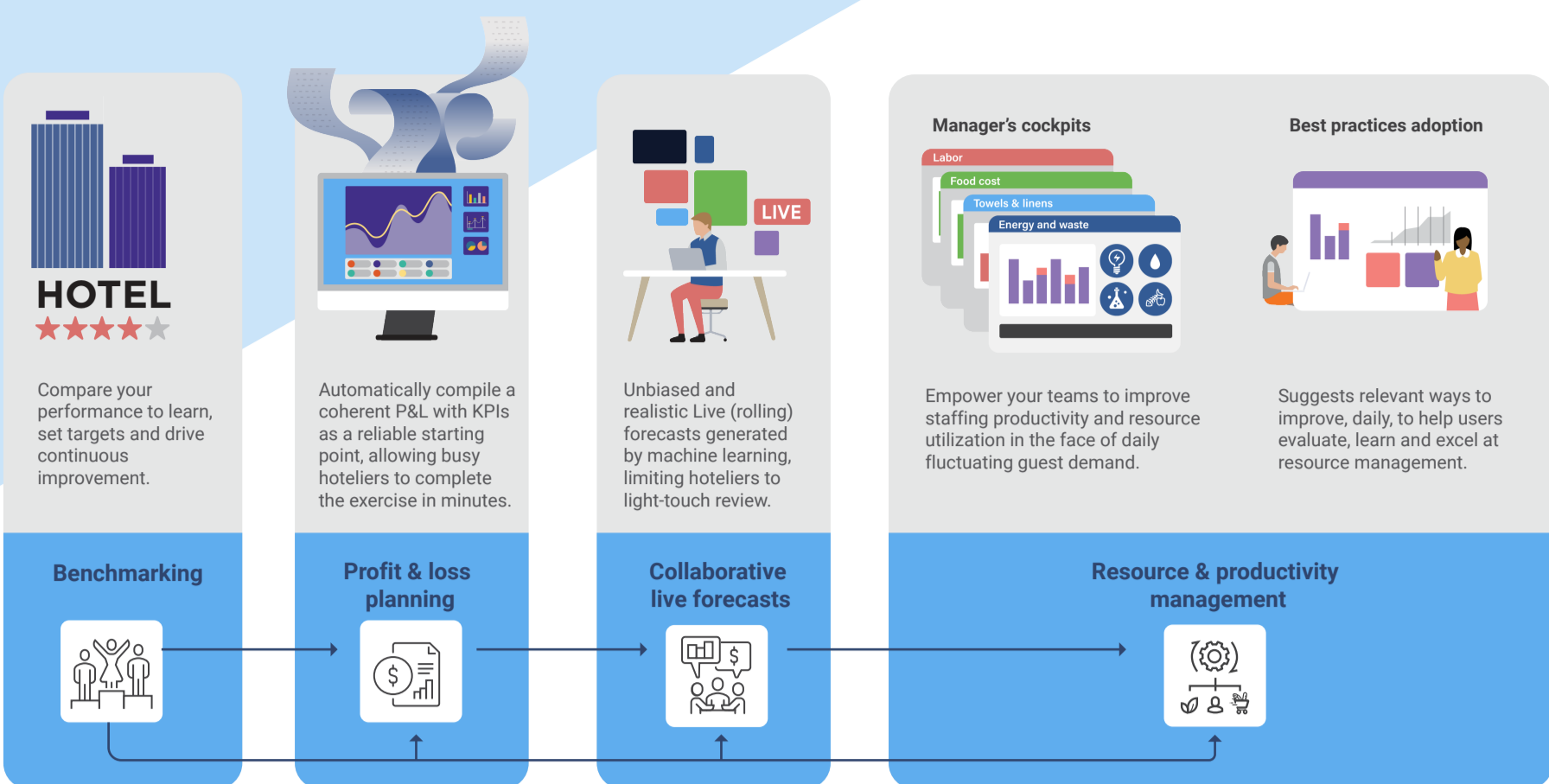


**Key challenges:**

- Business fluctuates from one day to the next, making optimal resource management difficult.
- Managers are feeling stretched thin, making analysis, learning and improving seem daunting.
- High staff turnover rate creates constant need for onboarding and upskilling.



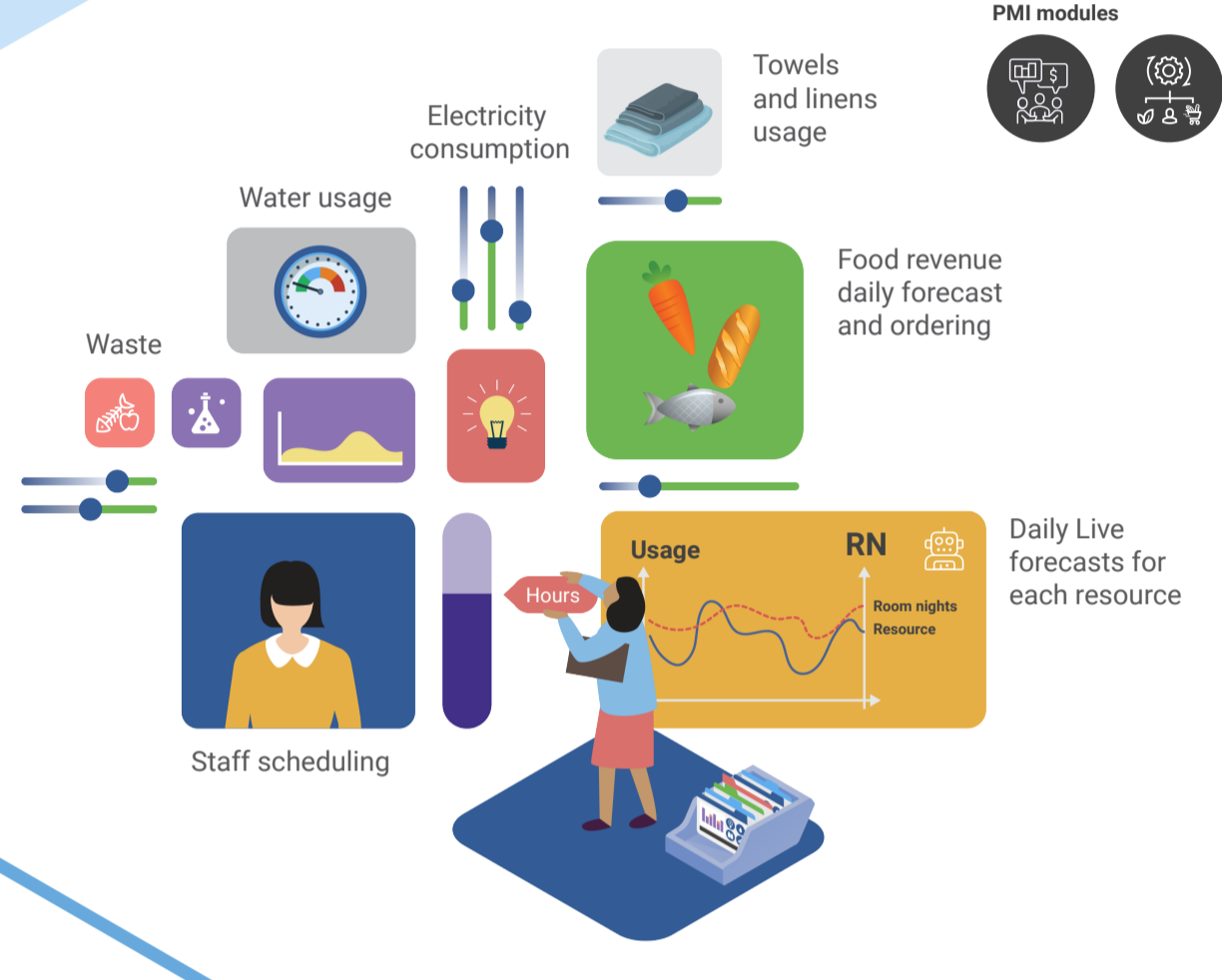
Based on past performance and compared with peers, PMI helps identify ambitious, yet achievable, productivity targets to set.

**PMI modules**



PMI provides resource guidance, making it easy to manage optimally in the face of daily fluctuating demand.

**Plan**

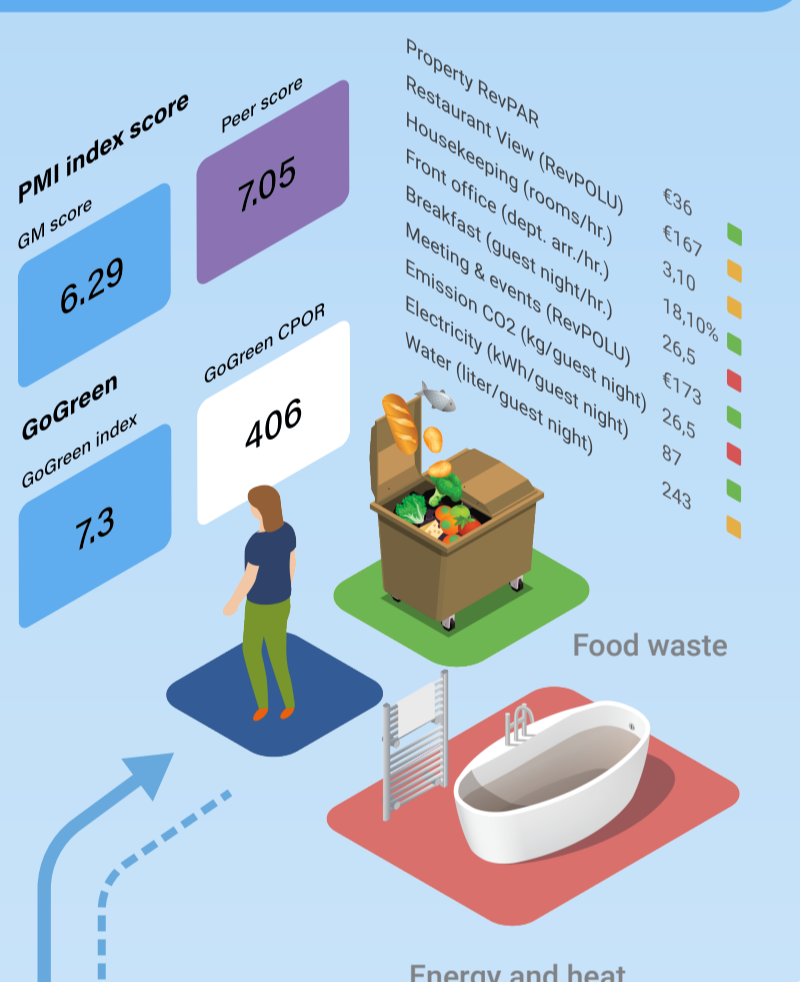


**PMI modules**



Monitor daily pace, take corrective actions if required, to get back on track and achieve targets.

**PMI modules**



PMI highlights insights to help make learning and developing mastery in resource management easy and engaging.

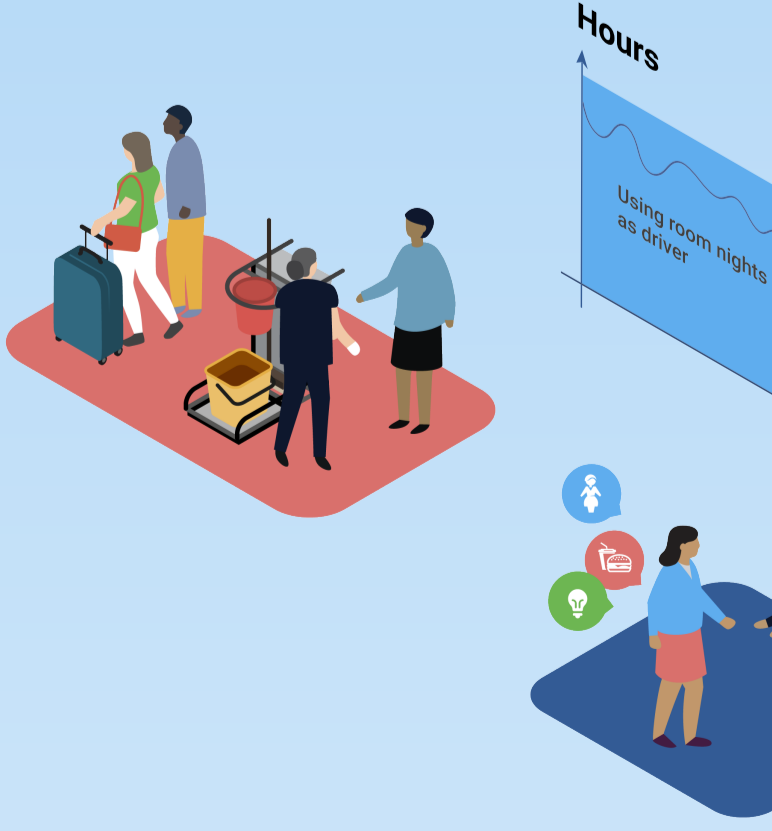
**PMI modules**



**Evaluate & learn**

**Policy change:** Clean only departure rooms. Change activity-cost driver from room nights to departures to optimize staffing in PMI.

**PMI modules**



**Adjust**

**Plan**